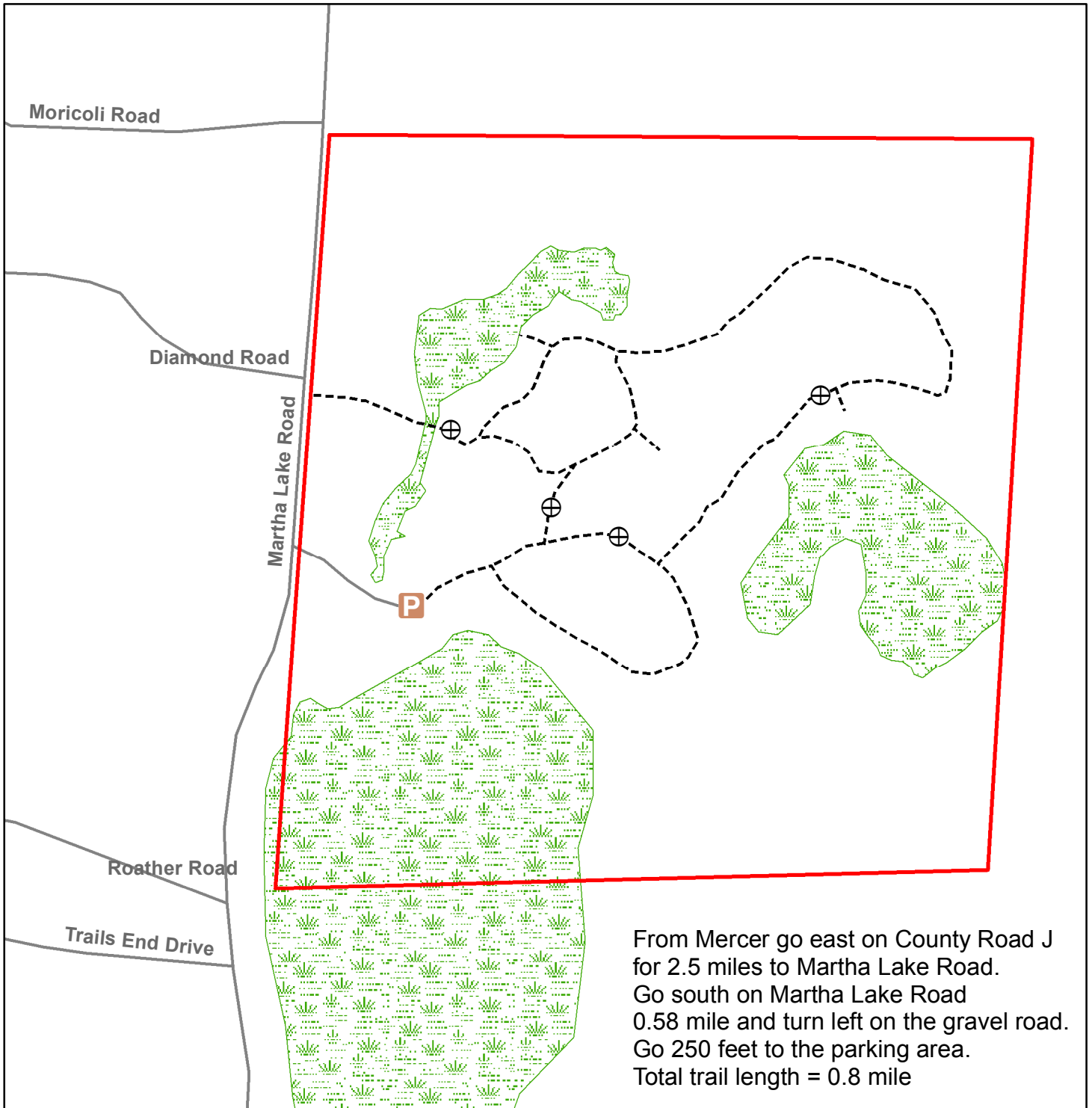


Carol Hanneman Mercer School Forest



From Mercer go east on County Road J for 2.5 miles to Martha Lake Road. Go south on Martha Lake Road 0.58 mile and turn left on the gravel road. Go 250 feet to the parking area. Total trail length = 0.8 mile



26 August 2020

	Interpretive sign		Trail
	Parking		Road
	Mercer School Forest		Wetland

